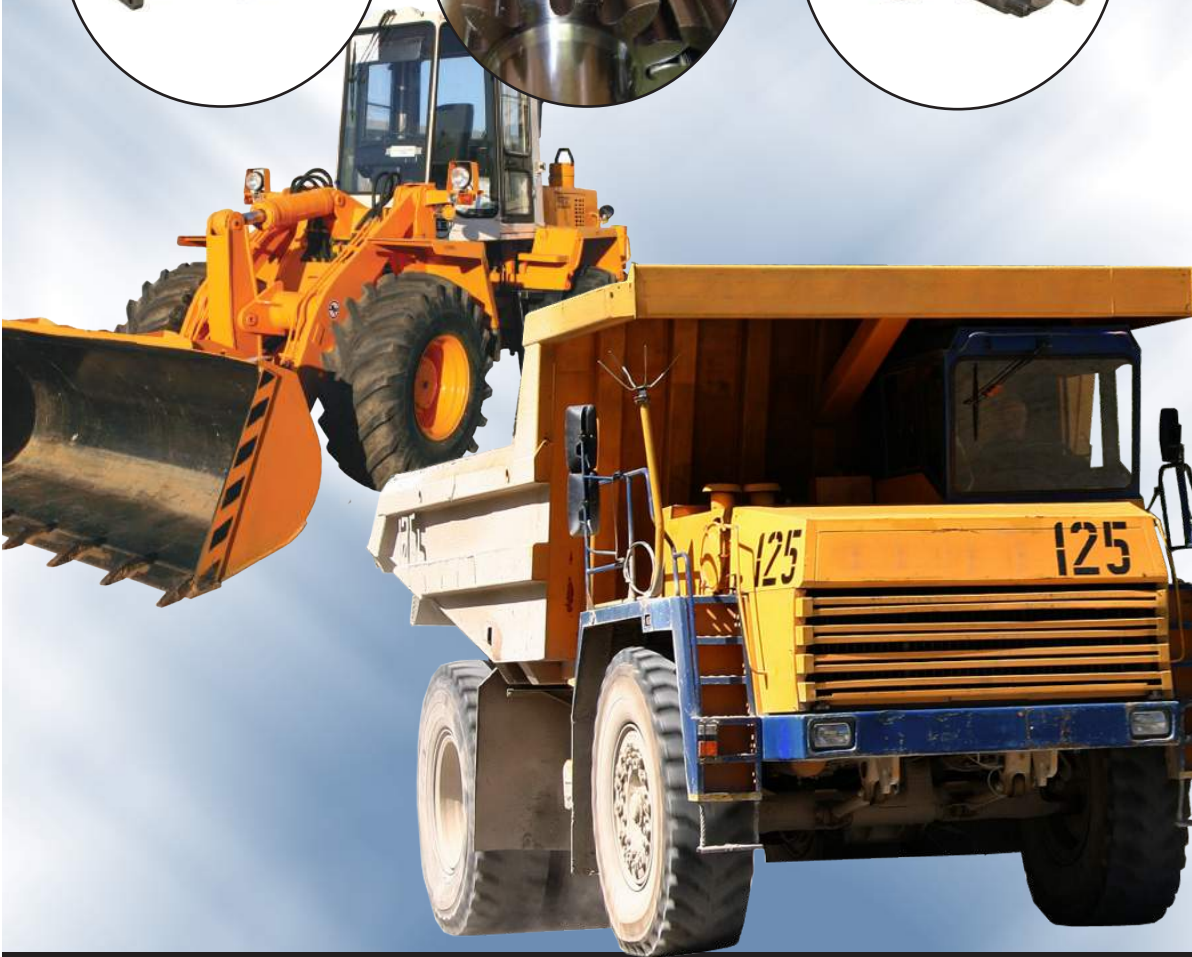
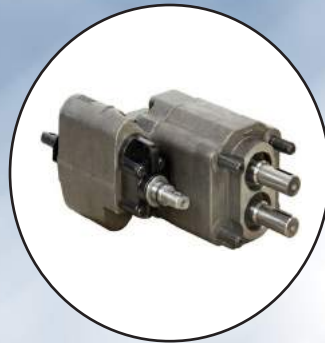
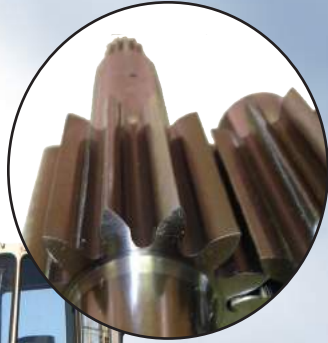


# ***Dynaco***

Your Source for Hydraulic Pump & Parts



ACTIVE: SEPTEMBER 1, 2010

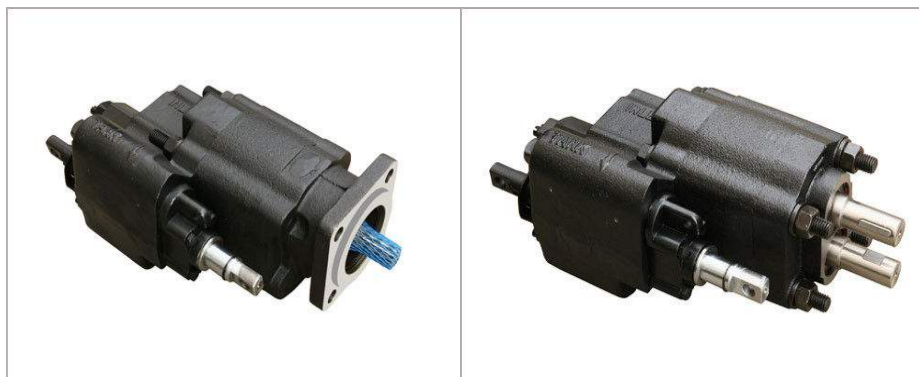
## C101 C102 Dump Pump Information

**YOUR SOURCE FOR HIGH QUALITY  
GEAR PUMPS AND COMPONENTS**

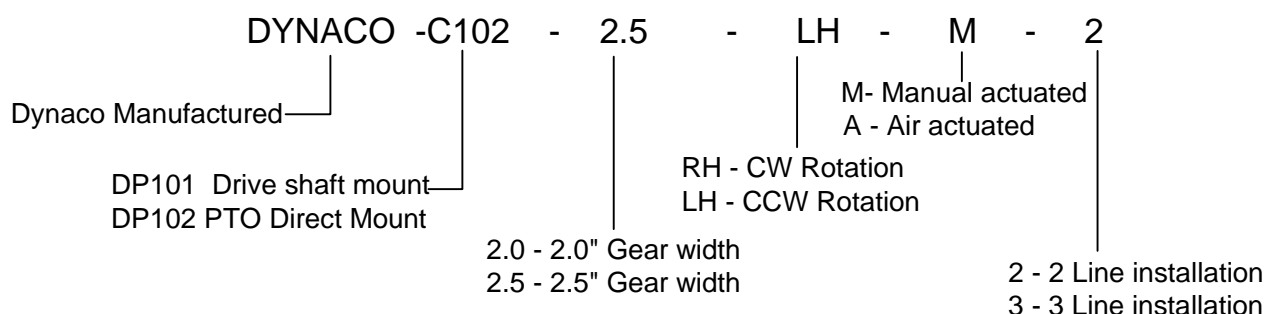
# DYNACO C101/C102 PUMP/VALVE COMBINATION



- \* Rugged Cast Iron Construction
- \* Interchangeable Parts
- \* Optional Mounting
- \* Optional Air shift actuation
- \* High performance



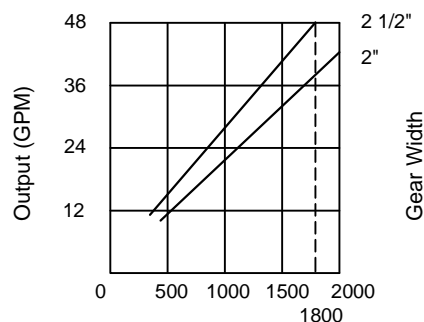
## ◆ Dump Pump/Valve Ordering Specification



### TECHNICAL DATA

Model series	Maximum psi	GPM @ 1800 RPM		MAXIMUM SPEED
		2"	2.5"	
DP101	2500	39	48	2400
DP102	2500	39	48	2400

### DYNACO DP101/102



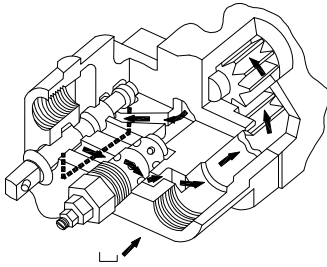
Dynaco offers a complete line of rugged cast iron pump / valve combination for the dump truck and trailer industry. Units are available for SAE-B PTO mounting (C102) or remote drive shaft mounting (C101). Units are supplied with full flow adjustable main relief valves to protect the pump and cylinder from overloading and shock loads. A three position valve assembly controls the raising, holding and lowering of a single acting cylinder, control valve can be cab operated using mechanical cable actuation or air shift control. Installation can be either 2 line or three line type using the sleeve supplied see page E4.2 .

# DYNACO C101/C102 PUMP/VALVE COMBINATION



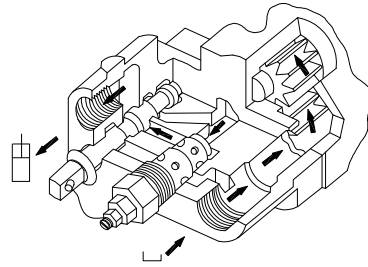
## 2-line installation

One line to cylinder, one line to the reservoir. For intermittent operation only.



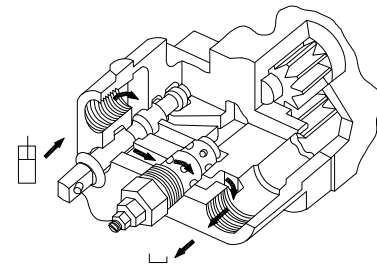
### Spool in Neutrol Position:

Oil recirculates internally.



### Spool in Raise Position:

Oil is routed through work port to raise the cylinder.

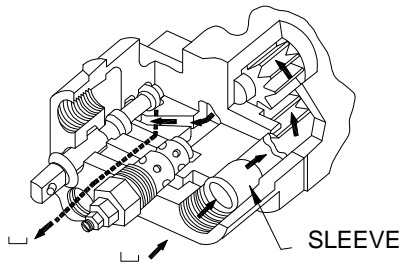


### Spool in Lower Position:

Oil flows from the cylinder through the relief valve to return to tank.

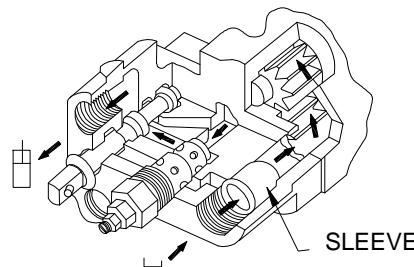
## 3-line installation

One line to cylinder, two lines to the reservoir. For continuous or intermittent operation.



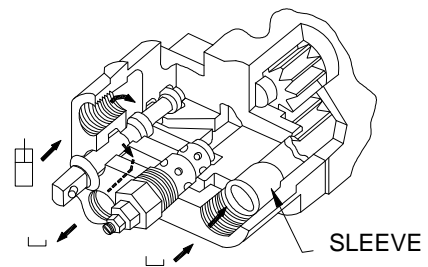
### Spool in Neutrol Position:

Oil circulates through the pump and returns to tank



### Spool in Raise Position:

Oil is routed through work port to raise the cylinder.

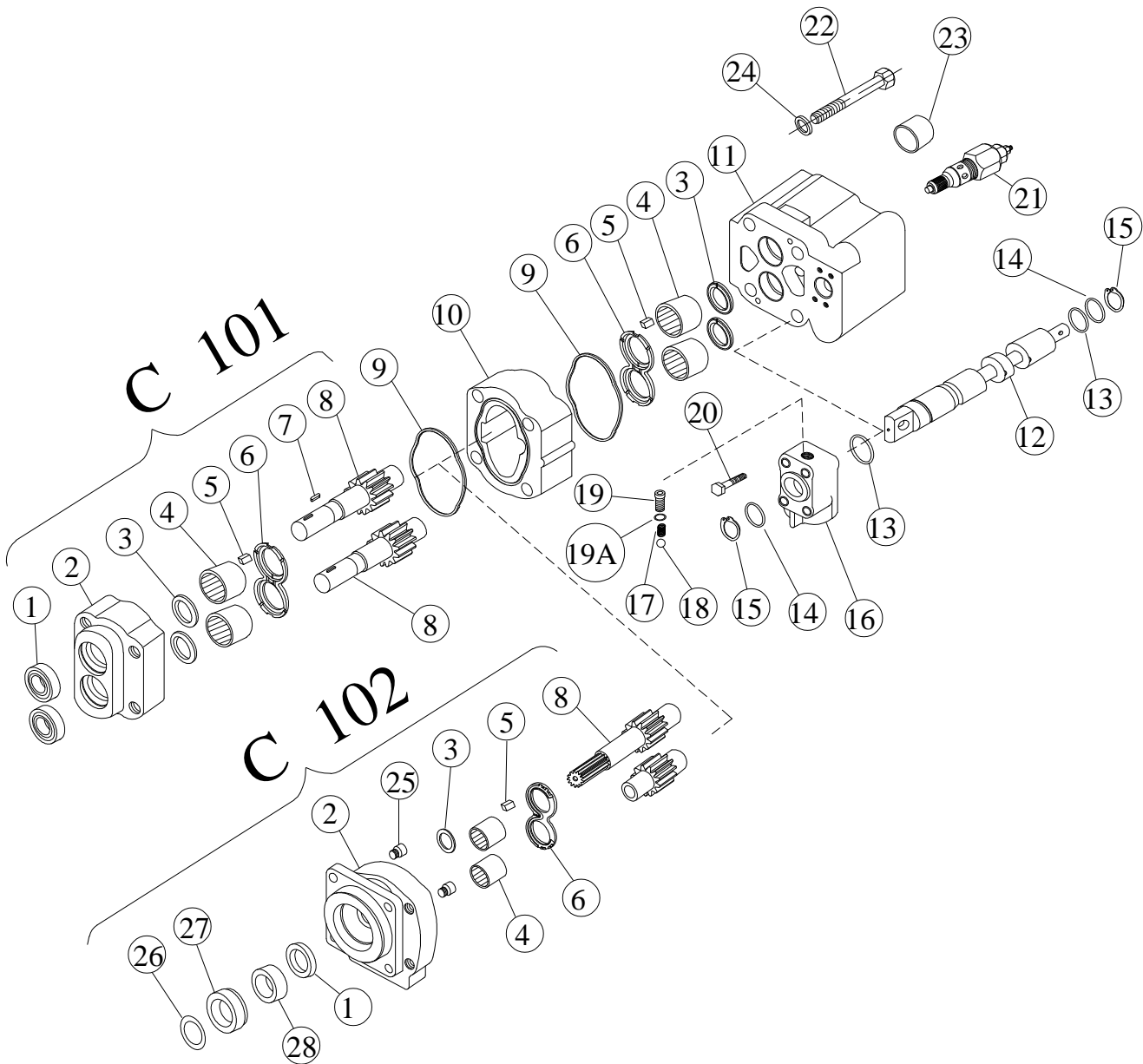


### Spool in Lower Position:

Oil flows from the cylinder through the bottom port and returns to tank.

Note: Three line installation is recommended whenever possible by installing the sleeve supplied in the inlet port and connecting the optional return line to tank. This configuration maintains a lower operating temperature and a return line filter can be installed to filter return flow. Two line installations are for intermittent operation only.

# DYNACO C101/C102 PUMP/VALVE COMBINATION



ITEM	DESCRIPTION	ITEM	DESCRIPTION	ITEM	DESCRIPTION
1	SHAFT SEAL	11	VAVLE HOUSING	20	CAP SCREWS
2	SHAFT END COVER	12	VALVE SPOOL	21	RELIEF VALVE ASSEMBLY
3	SHAFT RING SEALS	13	"O" RINGS	22	CAP CREWS
4	ROLLER BEARINGS	14	RETAINER RINGS	23	SLEEVE(OPTIONAL)
5	POCKET SEALS	15	SNAP RINGS	24	WASHERS
6	THRUST PLATES	16	VALVE CAP	25	CHECK ASSEMBLY
7	KEY	17	POPPET SPRING	26	SNAP RING
8	DRIVE HAFT&GEAR	18	STEEL BALL	27	SPACER
9	GASKET SEALS	19	DETENT RETAINER	28	RETAINER
10	GEAR HOUSING	19A	LOCAL WASHER		

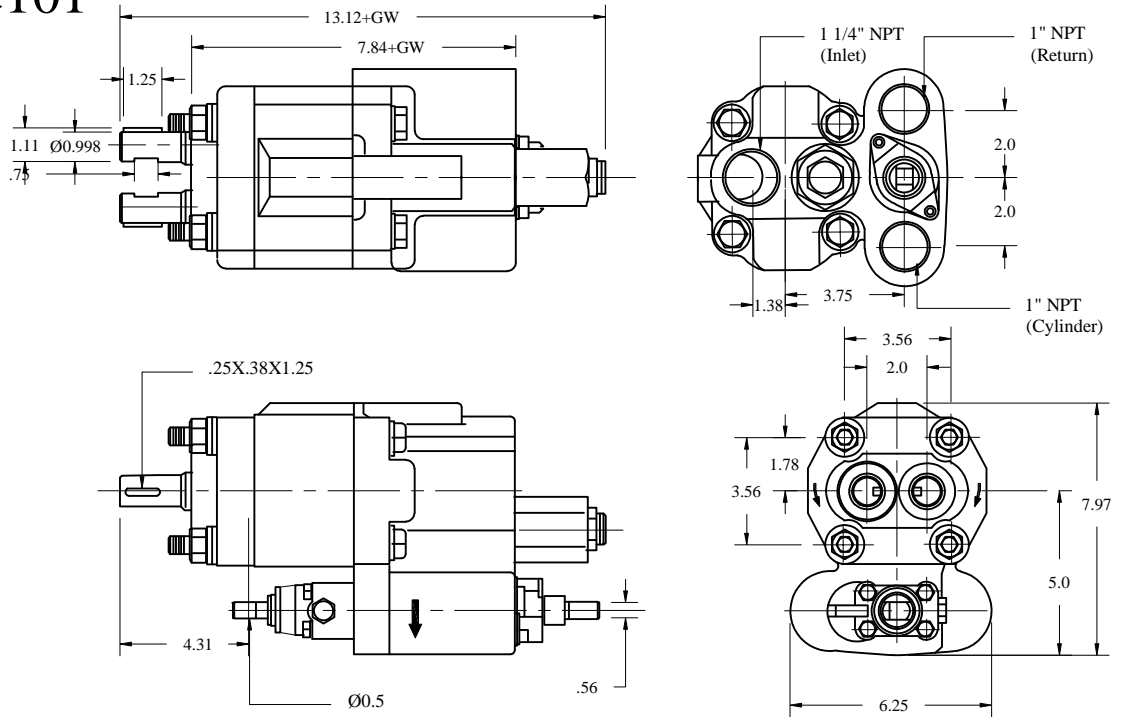
# DYNACO C101/C102

## PUMP/VALVE DIMENSIONS



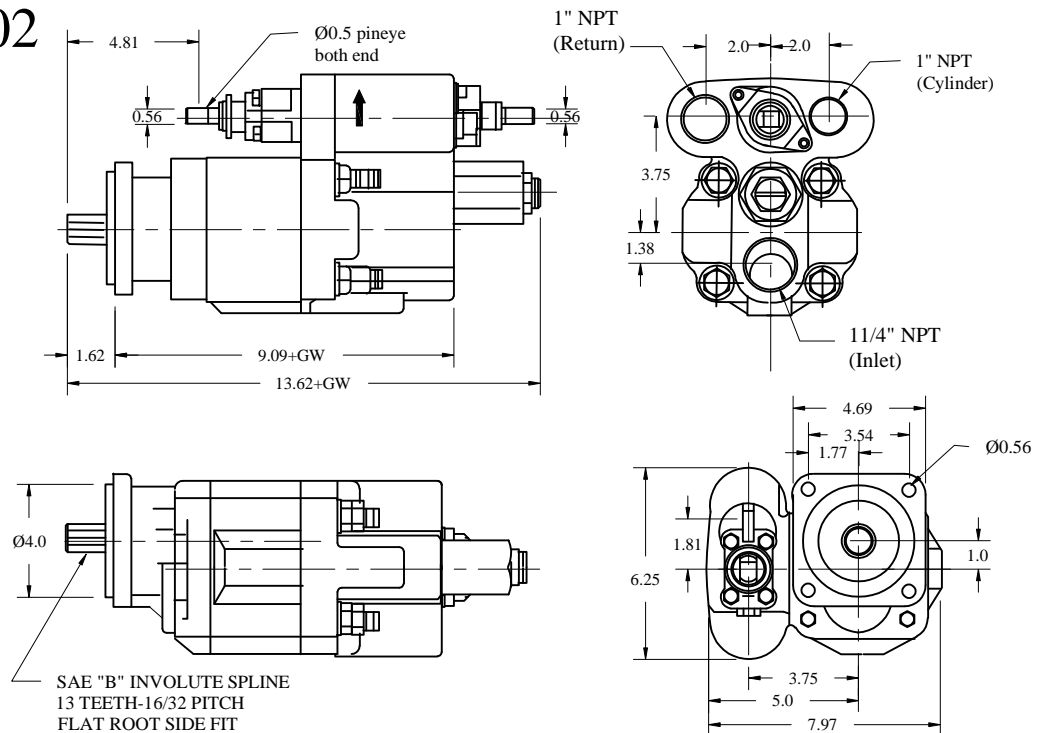
### Dynaco C101

GEAR WIDTH:  
2.0" 2.5"  
WEIGHT(lbs):  
66 69

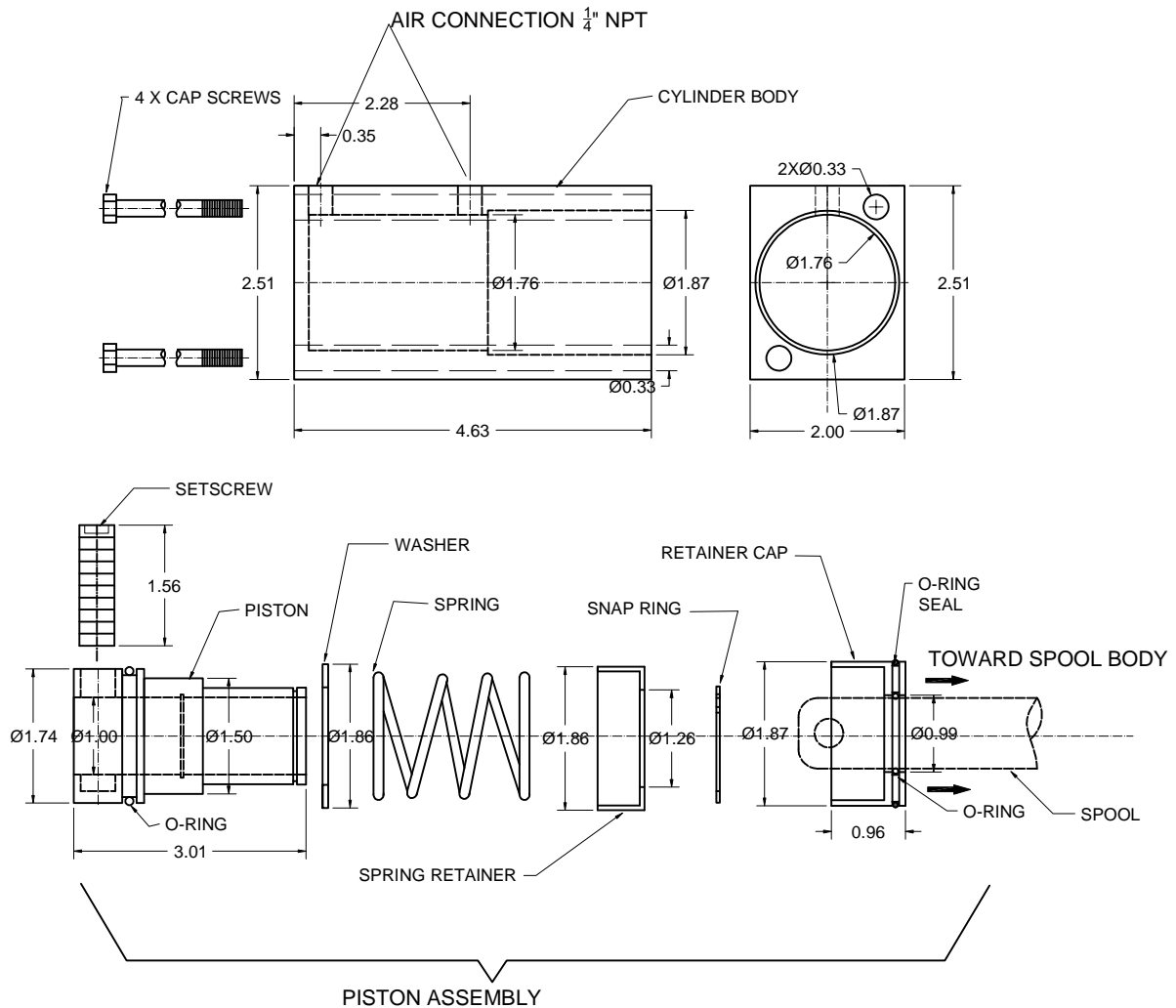


### Dynaco C102

GEAR WIDTH:  
2.0" 2.5"  
WEIGHT(lbs):  
68 71



# DYNACO C101/C102 AIR SHIFT



## **Air Shift Installation Instructions**

- The Air shift mounts on DYNACO C101 / C102 Dump pumps in place of the detent end cap
- Prepare work area by assuring a clean work environment for assembly & disassembly of the Dump pump spool valve

### **Preparing Pump / Valve spool for air shift kit installation**

- Remove snap ring and washer from valve spool
  - Remove the detent cap, spring and ball from the valves end cap
  - Remove four(4) cap screws and slide detent cap from the spool
- \*\*DO NOT REMOVE "O" RING FROM VALVE HOUSING\*\***

### **Installation of air shift kit**

- Remove retainer cap
- Remove snap ring / spring retainer / spring / washer
- Slide piston assembly from the cylinder body
- Remove setscrew from piston assembly using 1/4" hex wrench
- Grease and slide Retainer Cap over valve spool with flat face of cap facing the spool body
- Assemble snap ring / spring retainer / spring / washer on piston
- Slide piston over valve spool and align and insert set screw attaching the piston to the spool
- Grease piston and O Rings
- Slide cylinder body over the piston assembly making sure not to damage the O Rings
- Secure the assembly using the 4 cap screws supplied



# ***Dynaco***

Your Source for Hydraulic Pump & Parts

## **DYNACO BRAND REPLACEMENT PARTS**

Our extensive inventory assures you of prompt shipping of pumps and parts anywhere in the world.

Our parts are 100% interchangeable with OEM products. We are committed to high quality, zero defects, and getting your orders out correctly and on time.

Whatever your application, Dynaco has a high quality replacement product 100% backed by our commitment to service.

**WE WANT TO BE THE SUPPLIER FOR ALL YOUR GEAR PRODUCT NEEDS.**



**Dynaco Hydraulic Co., Ltd.**

Huilong Street 39, Yinzhou, ningbo, Zhejiang China

Tel: 0086 25 85360418 Fax: 0086-25-89428524

Email: nbgears@163.com ; nbgears@dynacohydraulic.com

Web: [www.dynacohydraulic.com](http://www.dynacohydraulic.com)